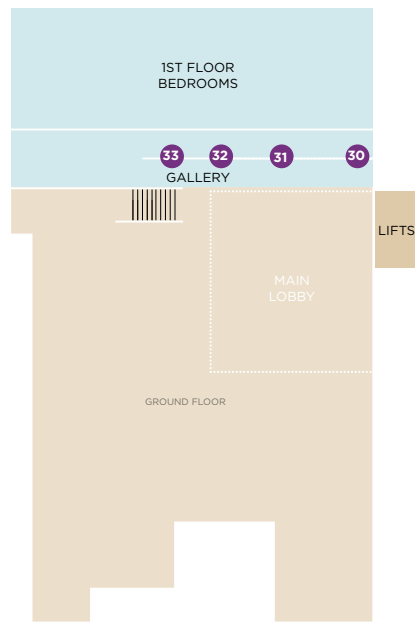
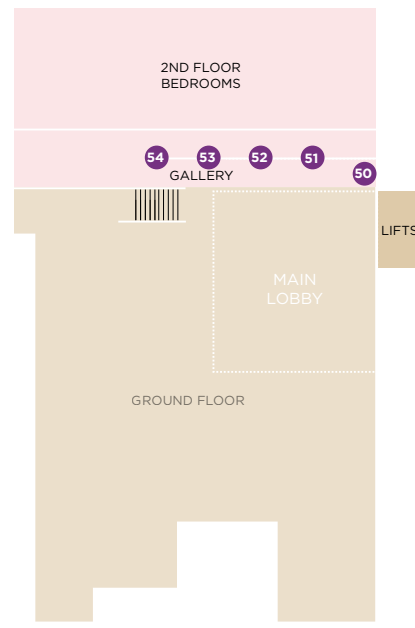


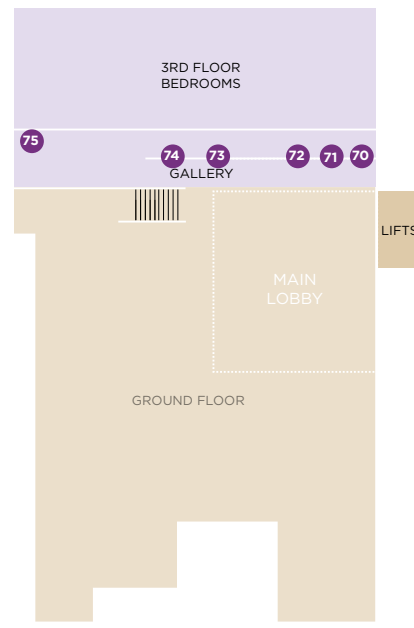
01 FLOOR



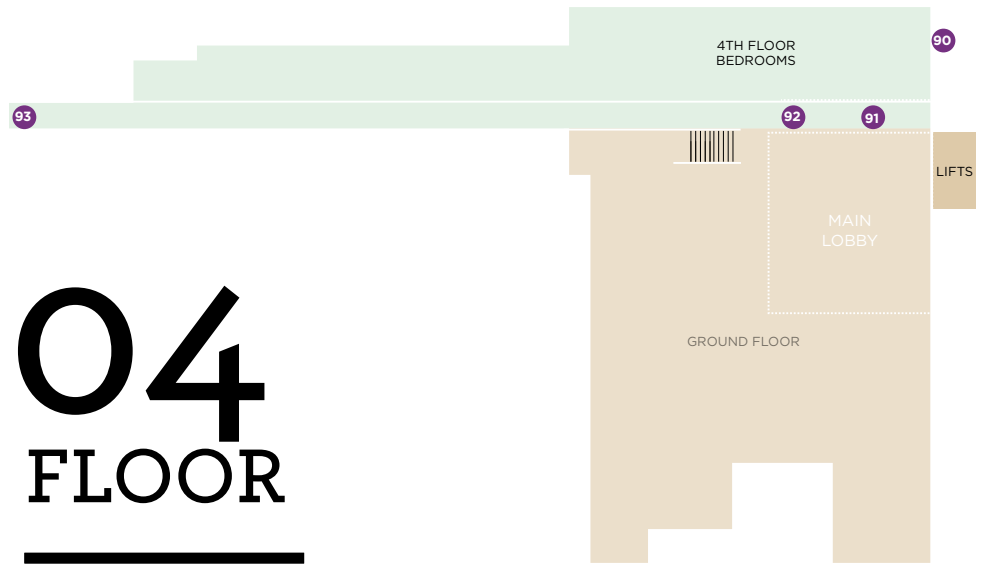
02 FLOOR



03 FLOOR



04 FLOOR



1172



CLONTARF CASTLE HOTEL

explore
the wonder

30: LAUGHING

Paola Bazz /

Laughing is the kind of artwork you'll find yourself examining from far away and in microscopic detail—both perspectives will yield very different results. On display in the Castle's 1st floor gallery is this 3D collage by Italian artist Paola Bazz, created using paper recycled from magazines, catalogues, and leaflets, to form a work that is visually, intellectually and emotionally engaging.



1st floor gallery.

32: SECRET GARDENERS

Juliana Manara /

Photography blended with art is a potent mixture that Brazilian-born, London-based artist Juliana Manara handles with delicate skill. In Secret Gardeners, her trademark tiny figures playfully romp through a lush green setting, almost as though they're about to scatter and take flight along the hallways and staircases of Clontarf Castle.

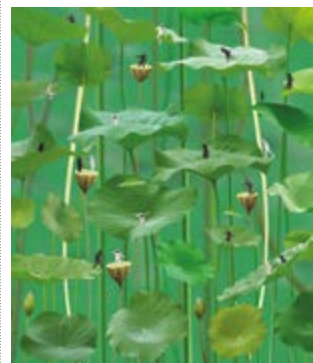


1st floor gallery, right of lifts.

31: LA BAYADÈRE

Ingrid Bugge /

The deep violet and blue tones of Danish multimedia artist Ingrid Bugge's La Bayadere demand attention from its position on the 1st floor gallery. Often focused on the body, Bugge sets out to portray passion, sensuality and movement, and this dream-like pigment print conveys a sense of utter weightlessness.



1st floor gallery.



33: EXOTIC FEEDING MACHINE

Marjorie Kaye /

Exotic Feeding Machine is a colourful and multi-layered piece, crafted in mixed media by US sculptor Marjorie Kaye. Her work focuses on the exploration of opposites: form versus colour, and organic versus geometric. Here in the first floor gallery of Clontarf Castle Hotel, an unexpected collision between precision and chaos awaits.



1st floor gallery, top of stairs from the lobby.

50: POKERFACE

Miss Aniela /

There's a story demanding to be told within the dreamlike hues of Pokerface, a captivating photographic piece by British artist Miss Aniela. Shot in the Belvoir Castle, the intense level of detail in this giclée print demands a close up inspection in the 2nd floor gallery.



2nd floor gallery.

51: MISTAKES

Federico Bebber /

Stare for hours at this striking giclée print and exciting new details will continue to emerge. Mistakes is an exquisite piece of photography by Italian digital artist Federico Bebber; vivid, vibrant details convey an atmosphere of dangerous seduction.



2nd floor gallery.

52: BIRDSONG

Bojan Jevtić /

Birdsong, by Serbian artist Bojan Jevtić, is an explosive piece of photography, incorporating vibrant colours and powerful, emotional elements. Housed in the 2nd floor gallery, the piece combines digital and traditional skills; the juxtaposition between the model's serene expression and the fiery texture of her surroundings is truly entrancing.



2nd floor corridor at right turn.



2nd floor gallery.

53: THE LEAVER

Melinda Matyas /

Your art-inspired journey through the 2nd floor gallery continues with The Leaver, a stunning painting by UK-based artist Melinda Matyas. It's a piece designed for quiet contemplation—the dancer's sense of loneliness skillfully balanced by the warm, calming tones of the textured oil paints.



2nd floor gallery

54: BLOSSOMING SPRING

Lilja Orlova-Holmes /

This particular corner of Clontarf Castle's second floor gallery hosts an homage to springtime. UK-based artist Lilja Orlova-Holmes casts a feeling of new life, green shoots and regeneration across her canvas with Blossoming Spring, an expressive oil painting that cleverly captures light and shadow.



Second floor gallery, top of stairs.

70: SK3

Dean West /

The painterly approach that Dean West, an Australian photographer, takes to his work ensures that each one is layered in meaning. The precise style of his composition adds an extra dimension to even the simplest of photographs—like this SK3, an eye-catching work that exudes an almost surreal atmosphere of perfect tranquility.



3rd floor gallery, right of lifts.

71: LINE UP

Martynova /

Maritime stories are deeply bound to the history of Clontarf Castle, positioned as it is within reach of Dublin Bay. We've chosen Line Up by UK-based artist Yuliya Martynova to pay tribute to the Castle's relationship with the water; study its layers of oil, acrylic, watercolour and gesso and you'll almost smell the sea and hear the sounds of the regatta.



3rd floor gallery.

72: ALPINE MEADOW

Marina Nelson /

Mosses, flowers and grass weave a luxuriously colourful carpet in Alpine Meadow, a mesmerising piece by Canadian artist Marina Nelson. It was designed to be displayed in any orientation; angle your head to see this layered landscape from a completely new perspective.



3rd floor gallery.

73: AS YOU FIND IT

Niki Hare /

Ascending to the third floor, you'll be warmed by a blast of colour from As You Find It, an acrylic painting by British artist Niki Hare. It's a piece that demands engagement from observers—a bright tapestry of words and shapes are waiting to be unwound.



3rd floor gallery.

74: YELLOW CAT

Pat Hidson /

Yellow Cat, an acrylic painting on canvas by Canadian artist Pat Hidson, explores the mind's ability to discover distinct objects layered deep within one art piece. Animal images vie for space within the curving, jumbled lines and shapes—the whole an emotional mix of colour and texture.



3rd floor gallery, top of stairs.

75: FANCY DANCER

Melinda Hughes-Berland /

One of the more playfully appealing items in the Clontarf Castle art collection is Fancy Dancer, a digital creation on canvas by US artist Melinda Hughes-Berland. It beautifully captures the lustrous plumage of an exotic African crane as he turns to scratch an itch—a transient moment transformed.



3rd floor bedroom corridor, right of entrance from lobby.

90: OWLS WITH HATS

Joeann Edmonds-Matthew /

The bird theme continues along the 4th floor bedroom corridor of Clontarf Castle with Owls with Hats, a photograph by Joeann Edmonds-Matthew. Her whimsical birds (photographed in Spain) delight all observers, their stern expressions contrasting cleverly with their playful hats.



4th floor bedroom corridor, right of entrance from landing.

91: MODERN WILDERNESS

Kevin Sloan /

You'll get the feeling there's more to it than meets the eye when you encounter Modern Wilderness, an archival pigment print by US artist Kevin Sloan. At the core of his work is a deep concern for the animals we share this world with; he uses symbolism and allegory to remind observers of the natural wonders that exist all around us.



4th floor bedroom corridor, left of entrance from lobby.

92: COWS/FISH/GIRAFFE/PENGUINS/RHINO/TIGER

Martyn Thompson / x 6 pieces

As you make your way to the 4th floor of Clontarf Castle, a series of photographs by South-Korea-based artist Martyn Thompson will draw your eye. These apparently light-hearted images reveal layers of meaning and play with the concept of animals in captivity, inviting observers to pause for a moment of reflection.



4th floor bedroom corridor.

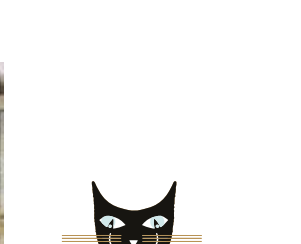
93: THE LAST FISH SUPPER

Gina Parr /

The Last Fish Supper by UK artist Gina Parr will certainly raise an eyebrow or two from its home on the fourth bedroom corridor. She describes her work as a quest for the sublime and moody, and this digital piece both explores Christian symbolism and raises tough questions about sustainable fishing.



At the end of the 4th floor bedroom corridor.

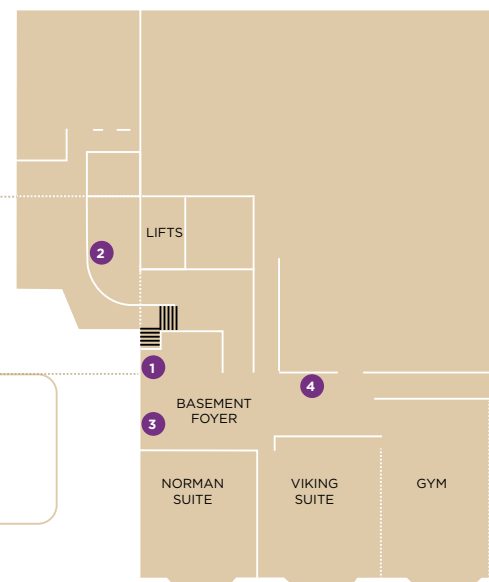


Art is not an afterthought at Clontarf Castle—it's an immersive journey that will help you unlock the story of one of Ireland's most unique castle hotels. You'll experience Dublin's history when you stay at the Castle, but there are also secrets to explore; they're brought to life through the paintings, photography and sculptures that await you around every corner.

Follow Clontarf Castle's art trail to uncover a series of intriguing artworks, one piece at a time. Our carefully curated collection is brimming with curiosities and waiting to be encountered—it's time to delve deep through layers of paint and pixels to find stories that want to be told.



LOWER GROUND FLOOR



1: THE BEACH STUDY

Arthur Maderson /

A variety of ocean blue tones sparkle in *The Beach Study*, a joyful painting by contemporary artist Arthur Maderson. Known for his focus on the play of light, Maderson's deep harmonies and vibrant juxtapositions of colour make his pieces—four of which reside at Clontarf Castle—truly memorable. Maderson, an Impressionist painter, was born in London but resides in County Waterford.



Top of Viking Suite stairs.

2: SHALL I GO FOR IT

Arthur Maderson /

Contemporary artist Arthur Maderson delights in capturing seemingly mundane moments and celebrating them with his striking use of light and colour. *Shall I go for it?* is a charming piece that illustrates a moment of indecision experienced by a mother and her young boy at a market.

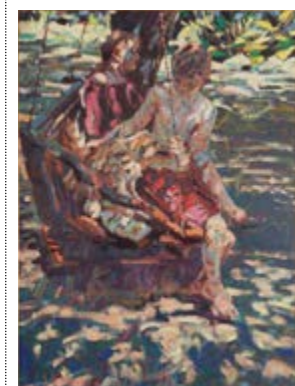


Foyer outside Viking Suite.

3: THE SWING SEAT

Arthur Maderson /

The third painting in the Arthur Maderson collection is *The Swing Seat*, completed in 2005 with oil on board. For Maderson, art equals life, and family moments like this one are depicted with playful affection. The dappled sunlight and warm tones of this piece combine to capture a memorable experience that many can relate to.

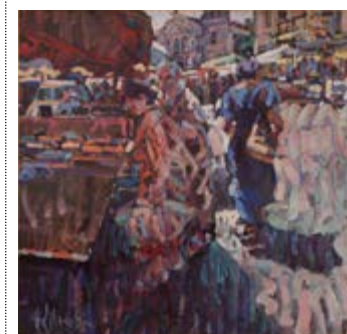


Viking Suite Foyer.

4: DIRECT AND DIFFUSED

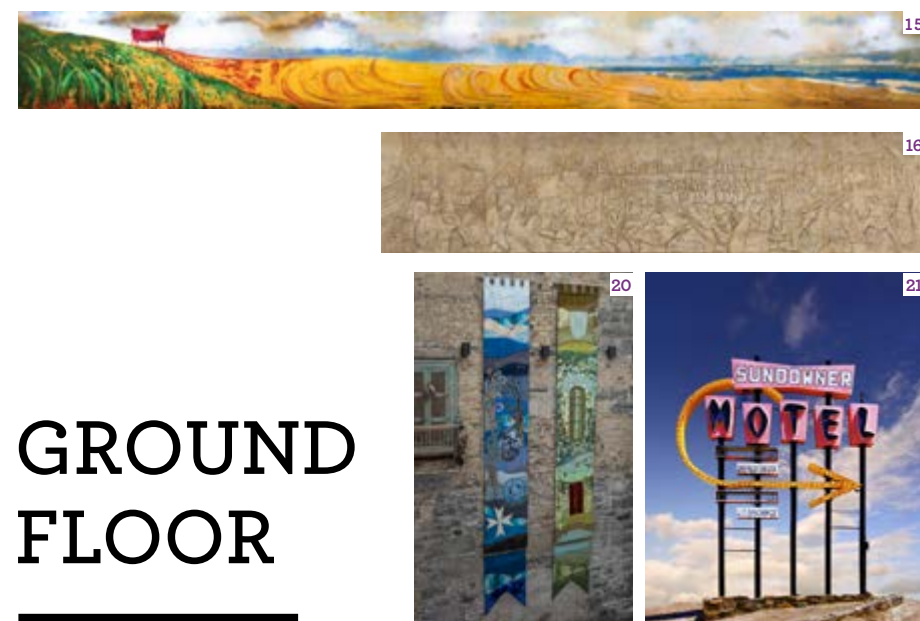
Arthur Maderson /

The final piece in Clontarf Castle's Arthur Maderson series is a beautiful illustration of a colourful market scene. *Direct and Diffused* captures a woman in the midst of an ordinary moment, browsing the wares of her local market—it's Maderson's skilful use of colour and tone that elevates this moment into something truly special and unique.



Viking Suite Foyer.

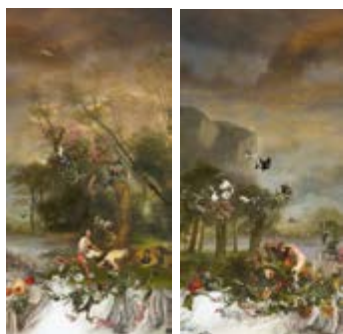
GROUND FLOOR



10 & 11: LIONS & MONKEYS

Iva Troj /

Drinking in the paintings of Bulgarian artist Iva Troj is like stepping into another world—one rich in texture and detail. In *Lions and Monkeys Diptych 1 and 2*, her traditional painting techniques blend with postmodern references, telling a Renaissance-style story with a multitude of characters.



Main entrance.

12: THE HUNTED

Flora Borsi /

Coming face-to-face with this surreal painting by Hungarian artist Flora Borsi in the entrance lobby of Clontarf Castle is an arresting experience. The amber eyes of the majestic lion depicted in the dreamlike *The Hunted* weave a spell, resulting in a work that delivers a powerfully fantastical punch.



Left side of entrance lobby, between suits of armour.

13: CLONTARF CASTLE 1833

Brendan Hayes /

This historic art piece by Brendan Hayes depicts Clontarf Castle as we know it today. The design of the final incarnation of the building was overseen by the distinguished Irish architect William Vitruvius Morrison in 1833, when the foundations of an older structure began to sink.



Right of The Viking entrance.

14: CLONTARF CASTLE 1172

Brendan Hayes /

The original Clontarf Castle was built in 1172 by Lord of Meath Hugh de Lacy, as part of a series of defensible sites designed to protect the city. While no trace remains of this ancient structure, an illustration by Irish artist Brendan Hayes celebrates its striking architecture.



Left of The Viking entrance.

15: BULL IN THE HEADLAND

Deirdre McClorey /

Bull in the Headland is a striking painting by Deirdre McClorey that captures the quirky story behind the Viking town of Clontarf and its connection to Clontarf Castle. The name 'Clontarf' derives from the term Cluain Tarbh, meaning "meadow of the bull"; legend has it that the sound of the sea hitting the shore at Clontarf sounds like the panting of a bull.

Great Hall Foyer across from the bar.

16: CLONTARF BATTLE SCENE

The Deluxe Group /

One fateful Friday in the year 1014, the quiet tranquillity of the coastal settlement of Clontarf in north Dublin was shattered. The Battle of Clontarf, which saw the forces of High King of Ireland Brian Ború pitted against a Norse-Irish alliance, took place more than a century before Clontarf Castle was built, on the same ground upon which the landmark rests today. This battle scene depicts a chapter in the history of Clontarf that left an indelible mark on the Viking town forever.

The Great Hall.

17: NUTHIN BUT A BULL THANG

Grégoire Devin /

Soft suede and glittering Swarovski elements combine to great effect in this piece waiting to be discovered along the Clontarf Castle art trail. *Nuthin but a Bull Thang* is the striking creation of emerging French street culture artist Grégoire Devin, and helps to illustrate the castle's close relationship with Bull Island, located just a 10 minute walk away.

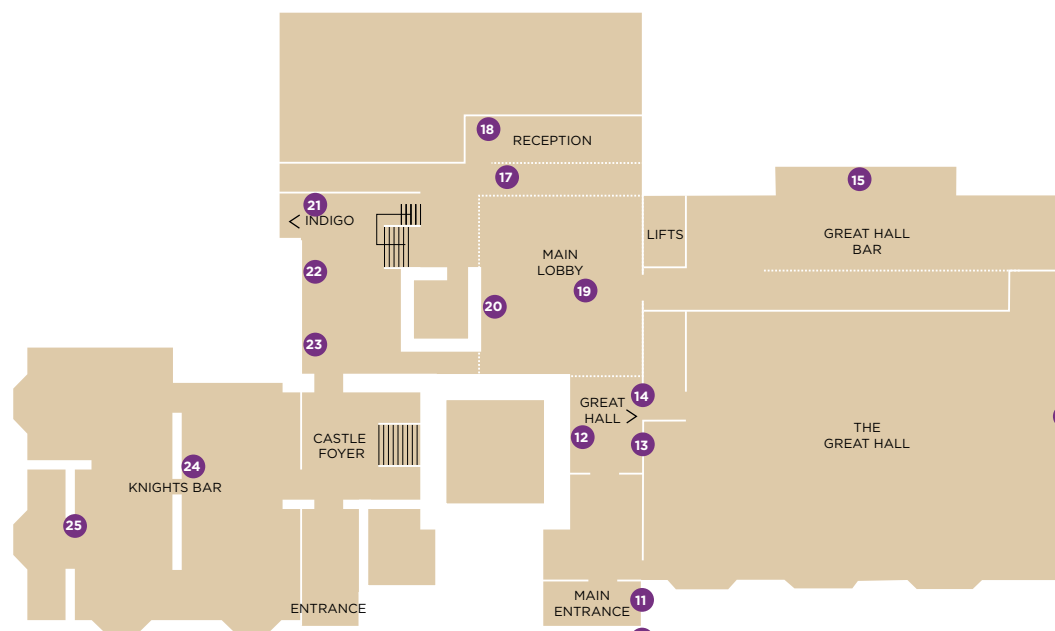


Wooden pillar between Concierge and Reception.

18: MOONLIGHT SONATA

Graham Knuttel /

Irish Artist, Graham Knuttel is renowned for his figurative still life paintings which are inspired by their potential for simplicity. This beautiful art piece brilliantly portrays an urban landscape of amusement, interest and appeal, truly bringing to life Knuttel's wicked sense of humour.



Behind Concierge Desk.

19: THE RIVER

Steve Yeates /

These beautiful trapeze artist sculptures are like moments in time, frozen and contained within tactile papier mâché forms. Sculpted by British artist Steve Yeates, *The River* (an edition of 12 pieces) now resides in the Atrium lobby of Clontarf Castle; dynamic expressions of the power and splendour of the human body.



Suspended from lobby atrium.

20: CLONTARF CASTLE THROUGH THE AGES

Deirdre McClorey /

A series of intricate tapestries located in the atrium lobby illustrates the eventful history of Clontarf Castle Hotel and its surroundings. From the Battle of Clontarf—an event that ended Viking rule in Ireland—to the Knights Templar, a mysterious monastic order that took ownership in the 13th century, the Castle's history is peppered with fantastic legends and local tales. See them come to life through the rich colours and

21: SUNDOWNER MOTEL

Ed Freeman /

This image is a part of a *Desert Reality* series which features old and abandoned buildings mostly located in the southern California desert. These have been digitally retouched to isolate and highlight the unusual characteristics of abandoned buildings.

At entrance to Indigo.

22: CONFETTICAL LANDSCAPE

Yigal Pardo /

Israeli photographer Yigal Pardo is dedicated to pushing boundaries and finding the fundamental characteristics that separate and unite his subjects. Within the beautiful *Confettical landscape # 10*, he captures a transient moment of magic, transforming two surreal situations into an eternal tableau.



Chesterfield area, right of mirror.

23: TOO GOOD TO EAT

Lynne Abrahamson /

Too Good to Eat, the next piece in the Clontarf Castle art collection, will raise a smile and tempt the taste buds at the same time. A series of delectable cupcakes, crafted using a variety of fabrics by British artist Lynne Abrahamson, explores the idea of transforming the ordinary and domestic into playful works of art.



Chesterfield area, left of mirror.

24: CLONTARF BATTLE SCENE IN KNIGHTS BAR

The Deluxe Group /

The historic Battle of Clontarf began at the break of dawn on Good Friday in the year 1014. By the time the sun would set over the hills of Dublin, many men had been slain and the forces of the King of Leinster and his Viking allies had been vanquished. The battle scene that hangs today in the Knight's Bar portrays Brian Ború, High King of Ireland, at its centre; though his side was ultimately victorious, the King was murdered by Brodir, leader of the Vikings, as he prayed inside his tent.



Behind main bar.

25: A TRIBUTE TO MAUREEN POTTER

Artist Unknown /

Located in the Knight's Bar is a tribute to the legendary Maureen Potter, doyenne of the Irish variety, theatre and pantomime circuit. Born in Fairview, Maureen had a prolific career, touring with Jack Hylton, performing on BBC television, and receiving the freedom of Dublin in 1984. She died in 2004, aged 79, and is buried in Saint John the Baptist cemetery in Clontarf. Today guests of Clontarf Castle can raise a glass to this proud Dublin character as they view her portrait in the Knight's Bar.



Knights Bar, at entrance to Terrace.

